





Avuke Energy Group is an African **Oil & Gas** solutions company that specialises in **Petroleum** products.

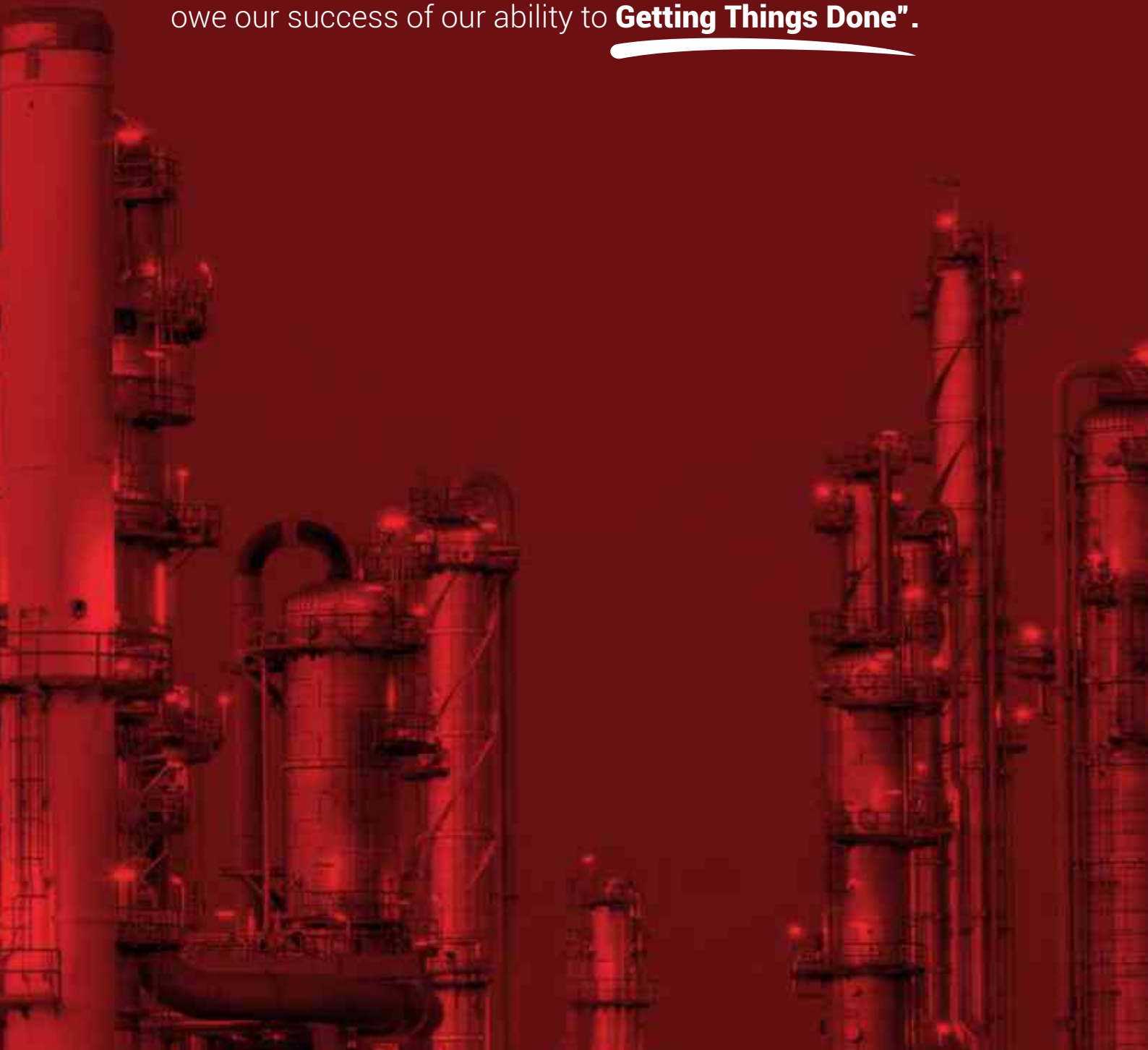
CONTENTS

- 3:** The Theory Of Execution
- 4:** Who We Are
- 7:** The Group
- 8:** Oil & Gas Value Chain
- 9:** Our Customer Profile
- 10:** Our Global Footprint
- 11:** Focus Areas
- 12:** Stakeholders
- 13:** Our Products
- 14:** Background On Products
- 16:** Trading Stakeholders
- 17:** Commodity Trade Finance

EXECUTION

“ex-e-cu-tion”

“Sebvest Group, which Avuke is the subsidiary of was born out of the philosophy of ex-e-cu-tion. It is how we think, how we approach every deal, how we structure relationships. Ex-e-cu-tion is what we have become. We owe our success of our ability to **Getting Things Done**”.





GEORGE SEBULELA

Group Chairman

Academic Record: Advanced Management Programme – INSEAD (France), Board Development Programme – Gordon Institute of Business Science (GIBS), BA (Com) – Fort Hare University (UFH), Leadership Development Programme – Gordon Institute of Business Science (GIBS) Principles of Business Management – Wits Business School, Post Graduate Diploma in Marketing – Institute of Marketing Management (IMM) Leverage Finance – Fitch (UK)

George Sebulela is a highly experienced leader, entrepreneur and distinct professional with many years' experience in strategy execution and investment banking in South Africa and internationally at a senior level. A board director with extensive corporate and business experience, he has achieved significant executive leadership accomplishments in business and philanthropy. His strong leadership, entrepreneurial skills constantly aid his natural affinity to cultivate relationships, persuade, convene, facilitate and build consensus among diverse individuals.

Current Board Appointments: Founder and President of African Entrepreneurs Council (AEC), Former Chairman and Secretary General of the Black Business Council (BBC), Director of Sanlam Investment: Private Wealth, Board Member of Eskom Holdings, Board Member of Aerosud Holdings, Secretary of United Arab Emirates South Africa Joint Business Council (UAESAJBC), Council Member of the University of Fort Hare, Chairman & Member of the Investment Committee of the University of Fort Hare Foundation, Secretary General of the Black Business Executive Circle (BBEC), serves on the Presidential Advisory Group chaired by the President of the Republic of South Africa and Deputy President of the Republic of South Africa, Committee member of the Johannesburg Stock Exchange (JSE) companies CEO's initiative steering committee chaired by the Minister of Finance and the Chairman of Telkom. He

serves in the B20 Trade and Investment, & B20 Financing Growth and Infrastructure. George has since inception been involved in BRICS (Brazil, Russia, India, China & South Africa) Business Council, where he was instrumental as a key driver in the successful establishment of Financial Services Working Group (FSWG), He is currently the Co-Chairman of the Regional Aviation Working Group (RAWG)

Current Professional Memberships: Current Professional Memberships: Investment Analyst Society Southern Africa (IASSA), Institute of Directors in Southern Africa (IOD), Black Business Executive Circle (BBEC), Association of Black Securities Investment Professionals (ABSIP), African Entrepreneurs Council (AEC), Black Business Council (BBC) He was a member of the ABSA Capital EXCO Committee, Chairman of Diversity Committee (DIVCO) of ABSA Capital, a committee member of the ABSA Group FSC responsible for the ABSA Group empowerment Financing, member of Johannesburg Loan Committee (JLOC), member of the Credit Committee, member of Executive Recruitment committee (RECO), Member of the ABSA Group 2010 steering committee. Mr Sebulela worked as a Business Development Executive at Avis Fleet Services, responsible for Business Development & Marketing, and Government & State Owned Enterprises.



J. VERSTER
 Chief Financial Officer

With strong expertise in origination, implementation of transactions, valuations investor relations, capital raising and listings, Jacques holds a BCom (Hons) CA (SA). He is a former Corporate Finance Executive at HSBC Investment Banking. Jacques negotiated with Johannesburg Metro Council on outsourcing of IT (with IBM) and fleet (with Super Group (JSE Listed) as well as Negotiated joint venture with IBM – (One of IBM's 10th biggest JV contracts worldwide)



W. BLAMEY
 Group Executive

Warwick started his career at Invicta Holdings before moving into private equity then Investments where he was head analyst at a leading Asset management house before moving to SA partner of UK based BCMS Corporate where he was a deal maker in their M&A division focusing on Sub Saharan Africa. Warwick's expertise is focused on investments into agriculture, manufacturing, engineering and services industries where he has been involved in various transactions over the past decade. Warwick holds a BCom and an MBA from Edinburgh Business School.



J.C LE ROUX
 Group Executive

Justin having studied Economics and Accounting at UKZN, came to JHB to do his chartered accounting articles with a focus on control environment. Justin has spent his career in listed companies moving to GEM Diamonds before joining Lonrho's prestigious business analyst team. It was at Lonrho where he was promoted to CFO of Lonrho FSCM making him one of the youngest CFO's in a listed environment. Understanding of a business's growth potential and upside has become a fundamental skill to the successes of his career.



DR. M. SEHUNOE Non-Executive Director

Dr Mpho Sehunoe is a graduate of the Medical University of South Africa (MEDUNSA) where she obtained her MBChB. Her further studies in Diploma in Business Management were completed at the University of South Africa (UNISA). She practised as a medical doctor for a period of eight years, at that time she owned Thusong Medical Centre. She was District Surgeon at the Department of Correctional Services. She is currently the Managing Director of Sebtech Technologies. She currently sits as a director on all Sebvest Holdings group of companies and she currently runs her own very successful integrated medical clinic.



J. MASHAMBA Non-Executive Director

Jerry is a Banker and Financial Services expert with over 20 years in the financial services industry in South Africa. He worked in auditing, banking & treasury before founding an Investment Banking Services Company. Jerry Mashamba trained and qualified with Ernst and Young Chartered Accountants CA (JHB, RSA). He holds a Bachelor of Accountancy degree, Bachelor of Commerce (Hons), Certificate in Theory of Accountancy and Postgraduate Diploma in Auditing. During his tenure at EY, he performed audits within the Banking and Financial Services Group including Banks, Insurance, Employee Benefits and numerous treasury houses. Jerry was involved in the offshore listings of Investec Bank Limited, Telkom and AngloGold. He then worked for Eskom Treasury as a Senior Finance Manager and until then he proceeded to lecture at the University of Natal and provided additional academic support to RAU and University of Natal Accountancy departments. Jerry has had a keen interest in banking and capital markets which prompted him to be the founder of JM Capital (Pty) Ltd in 2005, a financial services advisory firm.

THE GROUP

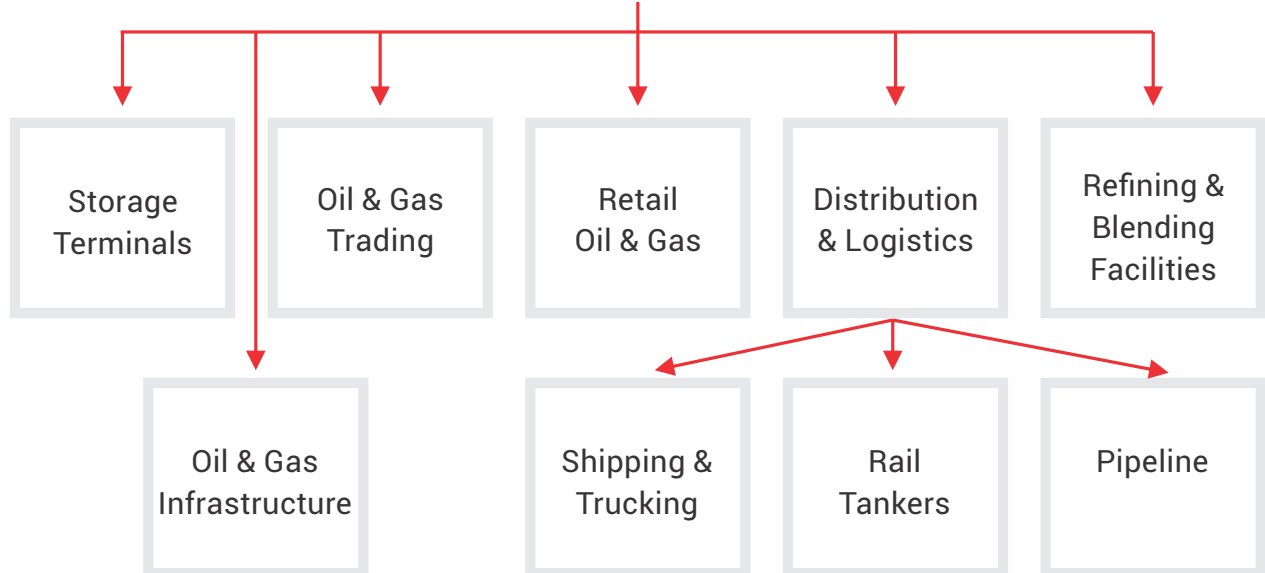
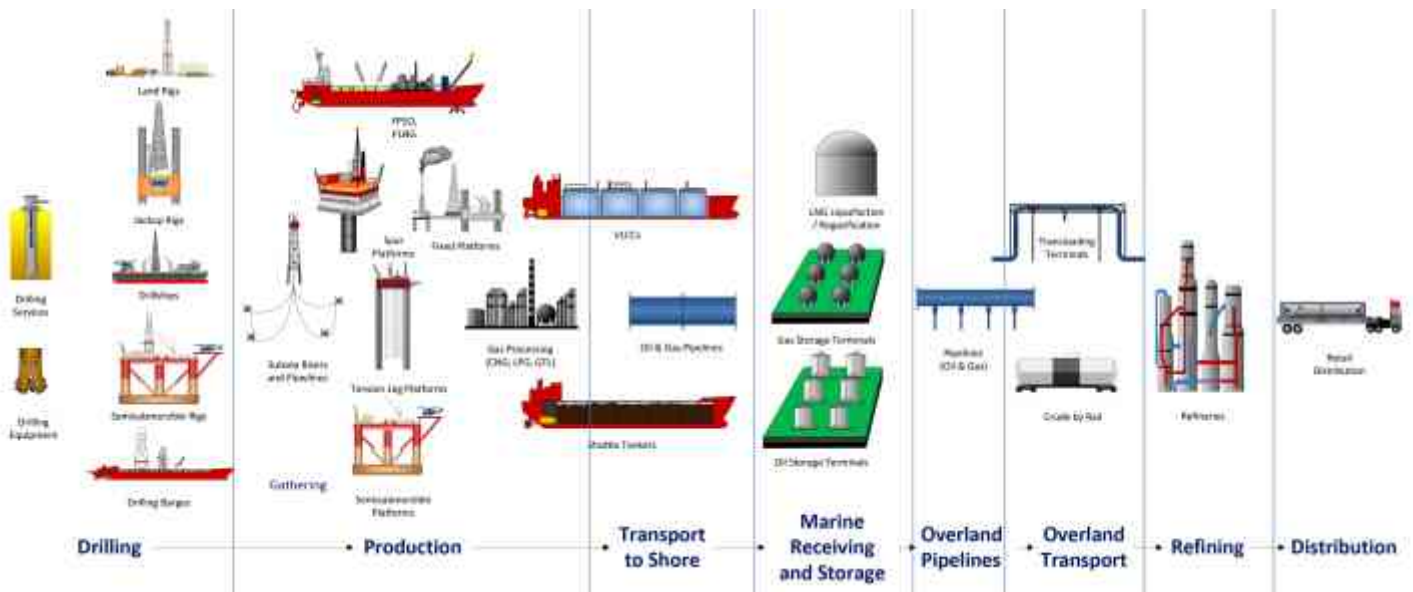
Avuke Energy Group is an Oil & Gas solutions company that specialises in the trading of Crude, Petroleum Distribution, Commercial Fleet Fuelling Services, Bulk Fuel Supply, Wholesale Petroleum Products, Storage, Retail Petroleum and comprehensive Lubricant Solutions for industrial, commercial and agricultural use all undertaken by our specialist subsidiaries.

MISSION

Our mission is to lower the total cost of operation for customers through the implementation of customized fuel management programs..

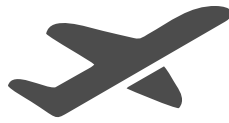
PRIMARY OBJECTIVES

- Increase shareholder value
- Partner with large global companies to fulfill our aspirations as and when required
- Build a strong global network of strategic partners
- Become a preferred choice for tailor-made financial services solutions to our customers
- Employ the "A" players in all our businesses
- Be known as trusted thought leaders in the Oil & Gas industry





REFINERIES



AVIATION



MINING



MARINE



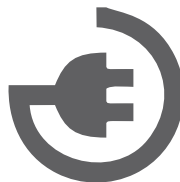
MILITARY



TRANSPORT & LOGISTICS



FARMING



ELECTRICITY UTILITIES



INDUSTRIAL



WHOLESALE & RETAIL

A Global Oil and Gas Solutions Company



visit us online: www.avukesa.com



FOCUS AREAS

AVUKE operations link the upstream and downstream entities. Its operations mostly include resource transportation and storage, such as pipelines and gathering systems.

Avuke Energy Group's downstream operations include prospects in refineries and marketing. Our work includes the refinement of, and turning crude oil into usable products such as gasoline, fuel oils, and retail, commercial as well as industrial petroleum-based products. The marketing is pivotal in the movement of the finished products from our energy plant to retailers or end users.

OUR VALUES

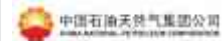
- Professionalism
- Integrity
- Value Addition
- Transparency
- Accountability
- Responsibility
- Empowerment
- Enterprise Development



STAKEHOLDERS

The companies participating in the sector. These include national oil (NOCs) and/or privately-owned oil companies (POCs). Companies which are operators of petroleum installations have an obvious role to play in creating value, but even non-operating investors often provide valuable capital and/or expertise. Key sources of value creation includes:

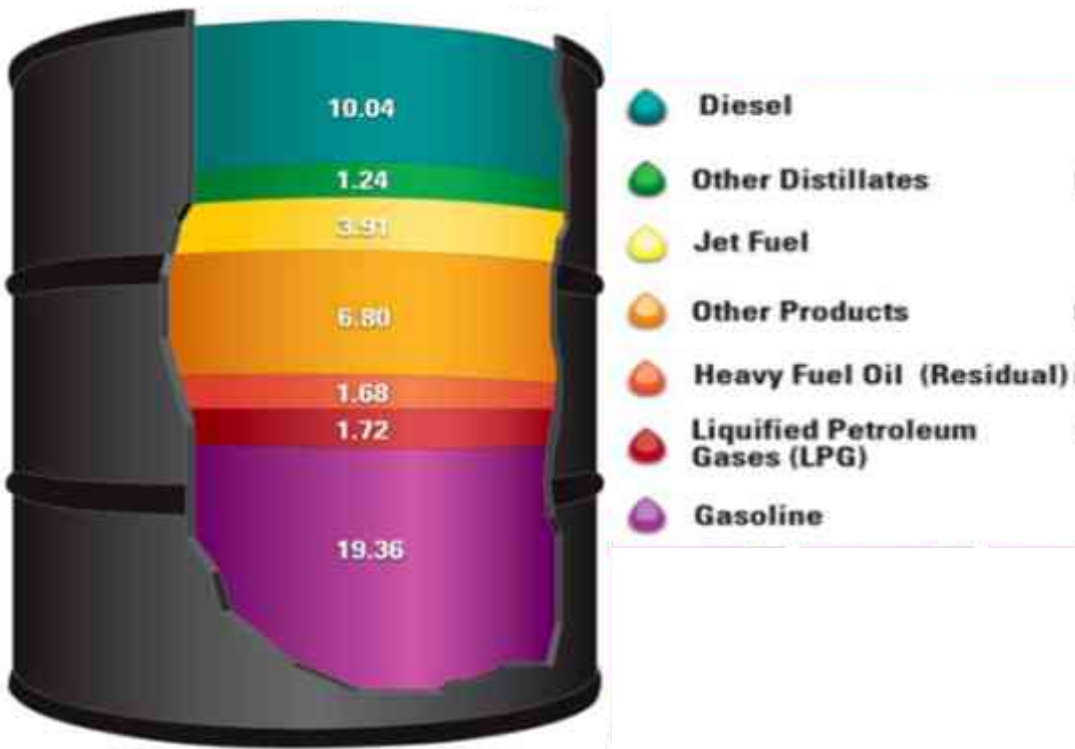
- (cost) efficiency of operations (incl. exploration, production, refining, marketing) and overhead spending, as well as investment efficiency;
- technical excellence, which may support higher reserve replacement and field recovery rates, fewer fuel losses, higher-value product yield (refining) etc.;
- potential benefits from horizontal concentration (economies of scale) and vertical integration (transaction costs, economies of scope); and
- corporate strategic choices, such as asset selection, targeting of domestic vs. export markets, etc.

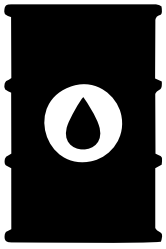




OUR PRODUCTS

These are all the products we supply throughout AFRICA & the World:





CRUDE OIL:

Crude oil is a naturally occurring, unrefined petroleum product composed of hydrocarbon deposits and other organic materials. A type of fossil fuel, crude oil can be refined to produce usable products such as gasoline, diesel and various forms of petrochemicals. It is a nonrenewable resource, which means that it can't be replaced naturally at the rate we consume it and is therefore a limited resource.

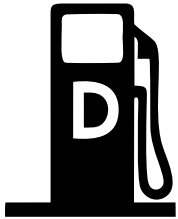


AVIATION FUEL:

Aviation fuel is a specialized type of petroleum-based fuel used to power aircraft. It is generally of a higher quality than fuels used in less critical applications, such as heating or road transport, and often contains additives to reduce the risk of icing or explosion due to high temperature, among other properties.

Most current commercial airlines and military aircraft use jet fuel for maximum fuel efficiency and lowest cost. These aircraft account for the vast majority of aviation fuel refined today, which is also used in diesel aircraft engines. Jet fuel is a clear to straw-colored fuel, based on either an unleaded kerosene (Jet A-1), or a naphtha-kerosene blend (Jet B). Similar to diesel fuel, it can be used in either compression ignition engines or turbine engines.

Jet-A powers modern commercial airliners and is a mix of pure kerosene and burns at temperatures at or above 49 °C (120 °F). Kerosene-based fuel has a much higher flash point than gasoline-based fuel, meaning that it requires significantly higher temperature to ignite. It is a high-quality fuel; if it fails the purity and other quality tests for use on jet aircraft, it is sold to other ground-based users with less demanding requirements, such as railroad engines.



DIESEL:

Some of the Grades of Diesel Avuke provides:

- Standard Grade diesel – 500ppm Sulphur (max) Standard Diesel 500ppm
 - Low Sulphur grade diesel – 50ppm Sulphur (max) Low-Sulphur diesel 50ppm
-



FUEL OIL:

Fuel oil (also known as heavy oil, marine fuel or furnace oil) is a fraction obtained from petroleum distillation, either as a distillate or a residue. In general terms, fuel oil is any liquid fuel that is burned in a furnace or boiler for the generation of heat or used in an engine for the generation of power,



GASOLINE:

Gasoline (American English) or petrol (British English) is a transparent petroleum-derived liquid that is used primarily as a fuel in spark-ignited internal combustion engines. It consists mostly of organic compounds obtained by the fractional distillation of petroleum, enhanced with a variety of additives.



TRADING STAKEHOLDERS

Avuke will from time to time collaborate with the following trading companies as and when is necessary :



GLENCORE



TRAFIGURA

MERCURIA

興隆 HIN LEONG

COMMODITY TRADE-FINANCE

Avuke pride itself to tailor made Trade-Finance solutions that include structured trade and supply-chain management, as well as Web-based platforms. Avuke's team & our Trade Finance key stakeholders are world specialists in trade-finance and structured-inventory products.

Our trade-and-commodity-finance unit focuses on agricultural commodities & energy. Avuke will further ensures that we & our clients are insured against the risk of nonpayment by customers we deal with. The coverage also includes both commercial and political risks.

Avuke' team of experts are furthermore experienced in export- and agency-finance solutions, in which case a relevant Key Stakeholder will be utilized. These include agency-supported working capital financing and structured trade.

Avuke through Sevest Capital Partners is experienced in originating, negotiating, structuring and syndicating trade-finance transactions. This enables us to expand our export reach to higher-risk markets. We use Export-Credit agencies to offer guarantees to cover banks' credit and commercial risks.

Avuke's key stakeholders are the world's best Trade Finance providers:





Head Office: Waterfall Crescent North,
Waterfall Park, Bekker Road
Vorna Valley, Midrand ,
Johannesburg, South Africa

Phone: +27 11 312 2324

Fax: +27 11 312 2325

Email: info@avukesa.com

Website: www.avukesa.com

